



Case Study

**Global German farming
equipment company**

Andreas Doeker leads a data management team for one of Germany's global leader in agriculture machinery.

ABOUT THE CUSTOMER

A global leader in agricultural machinery and technology, this Germany-based company is known for its innovative solutions in farming equipment. Producing a wide range of machinery, including tractors, combine harvesters, self-propelled forage harvesters, balers, and forage harvesting tools, the company plays a pivotal role in enhancing agricultural productivity worldwide.

Operating in over 150 countries, the company delivers high-quality machines that enhance efficiency and sustainability to meet the demands of modern farming.

INDUSTRY
Insurance/Finance



CHALLENGE

Improve data quality across systems with an efficient tool

Andreas's team were looking for a solution that could help them improve data quality processes across the system - all while maintaining operational efficiency. data inconsistencies, duplicates, and discrepancies across departments created obstacles, slowing decision-making and affecting the ability to provide seamless support.

Their challenge was to find a standalone, flexible tool that could simplify data cleaning and matching processes. The goal was to streamline data management, eliminate duplicates, and provide clear, actionable insights, allowing the organization to make better decisions in the field and improve overall operations globally.

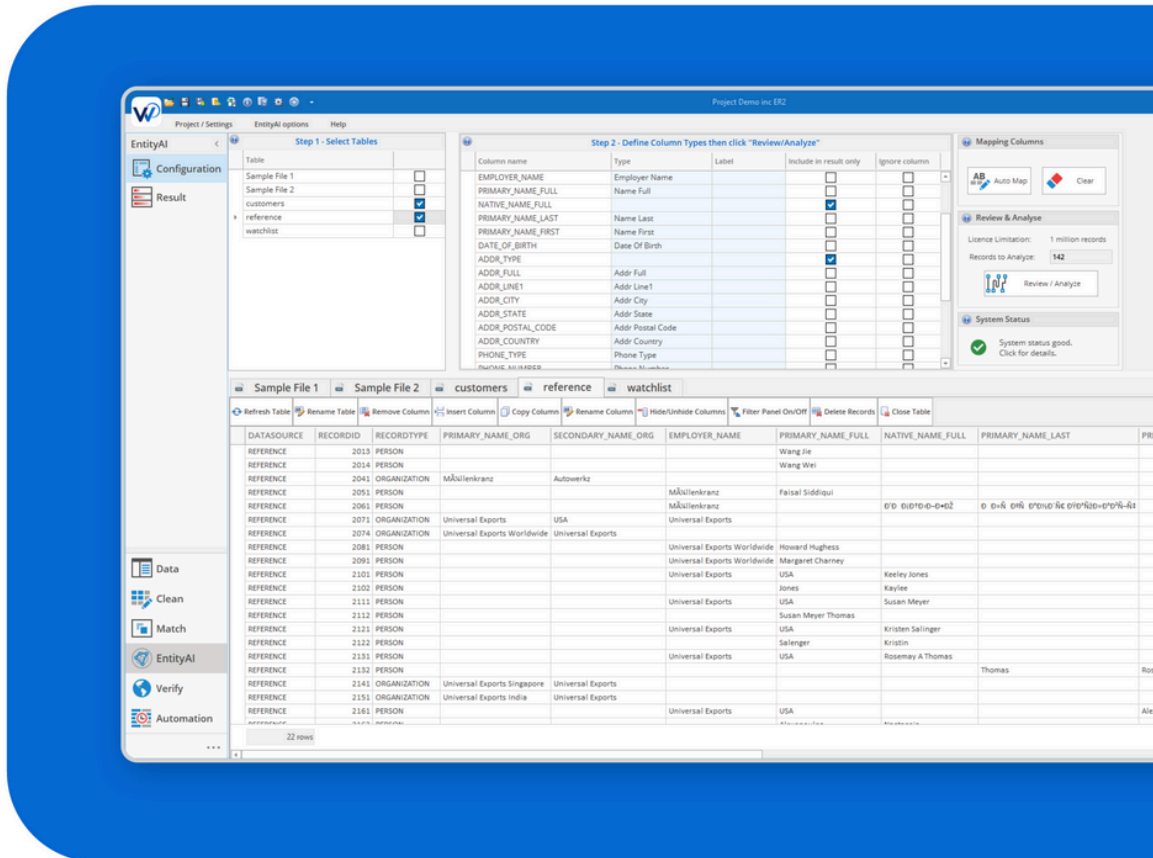


SOLUTION

WinPure's Data Quality Suite With AI Data Match Proved to be the Standalone Product the Team Needed!

WinPure's data quality suite provided a standalone solution for Andreas's team. From easily integrating data from different sources, to profiling for errors, to cleaning, standardizing and finally using data match to deduplicate complex duplicates, the software was the perfect fit. The platform enabled them to load data efficiently, apply data cleaning processes, and leverage highly adaptable matching rules, all without requiring complex integration into existing systems. This seamless approach helped them avoid the disruptions that typically come with introducing new software into an established workflow.

For Andreas and his team, some of WinPure's most outstanding features included its flexible data loading capabilities, which allowed users to work with various data sets without complications. This flexibility was crucial for a company dealing with large volumes of data from multiple sources. WinPure also offered adaptable matching rules that helped the team intelligently match and identify duplicates, ensuring consistency across their data.



WINPURE'S ALL-IN-ONE DATA QUALITY SUITE WITH AI-DATA MATCHING AND FUZZY MATCHING CAPABILITIES



Results and Benefits

By integrating the software into their workflow, the organization was able to:

- Track and improve data quality efficiently without being bogged down by complexities.
- Improve their data quality processes without requiring disruptive changes.
- Use the AI-data match to identify hidden duplicates across millions of rows of data.



CONTACT

We hoped this case study answered many of your questions!

If you'd like to know more about our products and to discuss your specific requirements contact our team today:

Address

Green Park
200 Brook Dr
Reading
RG2 6UB,
United Kingdom

Telephone

UK/EU:
0118 228 5299
USA:
866 258 0541

Email

sales@winpure.com
admin@winpure.com



Very customer-focused and great customer support, with understanding of our internal processes and challenges.

Andreas Doeker,
Manager